

Reno County CDDO area Service Providers

Advocate Care Services, Inc.

151 S. Whittier, Ste. 1500
Wichita, KS 67207
Tel (316) 260-9910
www.advocatecare.org

Another Day

11802 W. 77th St.
Lenexa, KS 66214
Tel (913) 599-2221
www.anotherday.info

Accessible Home Health, Inc.

1300 E. Iron Ave., Ste. 121
Salina, KS 67401
Tel (888) 464-6521
www.accessiblehh.com

Craig Homecare

1202 E. 1st Street North
Wichita, KS 67214
Tel (316) 264-9988
www.craighomecare.com

Disability Supports of the Great Plains, Inc.

2520 N Waldron
Hutchinson, KS 67502
Tel (620) 669-8522
www.dsqp.org

GT Independence

215 Broadus St.
Sturgis, MI 49091
Tel (269) 651-4500
Toll (877) 651-4500
www.gtindependence.com

Helpers, Inc.

15540 Pflumm Rd
Olathe, KS 66062
Tel (913) 322-7212
www.helpersinc.org

Home Buddy, LLC (Med Alert Rental)

3510 W. Central, Ste. 100
Wichita, KS 67203
Tel (316) 262-8339
www.homebuddy.org

Interim Healthcare

525 N. Main
Hutchinson, KS 67501
Tel (620) 663-2423
www.interimhealthcare.com

Life Patterns

3300 SW 29th St., Suite 100
Topeka, KS 66614
Tel (785) 273-7189
www.lifepatternsks.org

OCCK, Inc.

1710 W. Schilling Rd.
Salina, KS 67401
Tel (785) 827-9383
www.occk.com

ResCare Newton

700 E 14th
Newton, KS 67114
Tel (316)283-5170
www.rescare.com

Resource Center for Independent Living

1137 Laing, PO Box 257
Osage City, KS 66523
Tel (785) 528-3105
www.rcilinc.org

TECH Inc.

3000 E Ave B
Hutchinson, KS 67501
Tel (620)-663-2216
www.techinc.org

TFI Family Services (Children's Res)

PO Box 2224
Emporia, KS 66801
Tel (620) 343-6111
www.tffamily.org

Trust HomeCare, LLC

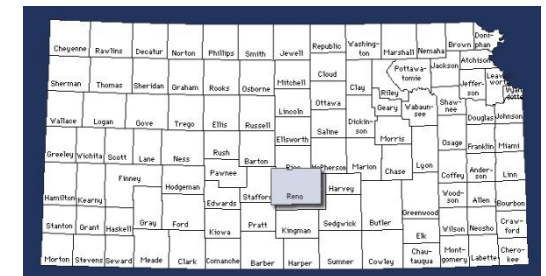
6224 Shadybrook St.
Wichita, KS 67208
Tel (316) 683-7700
www.tffamily.org

Reno County CDDO with the cooperation of its Providers, tries to maintain the most current information available. We encourage you to contact *ALL* the listed providers for the services you are seeking. Addresses may be misleading; they may already offer or be willing to offer services in your area.

April 2019



Services Guide



Reno County CDDO
PO Box 2144
Hutchinson, KS 67504
620-663-2219

www.renocountycddo.org

Targeted Case Management

Case Managers help the person and their support network navigate the world of services and supports. They can help identify, select, obtain, and coordinate paid and unpaid services to enhance the person's independence, integration, and productivity by using their Person Centered Support Plan as a guide.

Disability Supports of the Great Plains, Inc.
ResCare Newton
TECH, Inc.

Day Supports

These daytime services are structured activities; which may include workplace training, socialization, recreation, and community inclusion. Participation in these services helps a person develop a sense of personal contribution, accomplishment or compensation.

Disability Supports of the Great Plains, Inc.
TECH, Inc.
ResCare Newton

Supported Employment

Ongoing support services to sustain paid employment in a job site integrated with a general work force. May include assessment, job placement, on the job training in work and work related skills and monitoring to assure job retention.

TECH, Inc.
Disability Supports of the Great Plains, Inc.



Providers of each service are listed in red under the service description.



Residential Supports

These licensed services help persons with their daily living needs. They address the person's independence, adaptive needs, integration, and participation in the community. Requirements vary for the residential home depending on the individual receiving services and their age.

Overnight Respite for relief to family for overnight. Planned in segments and time limited.

Disability Supports of the Great Plains, Inc.
ResCare Newton
TFI Family Services (children only)
TECH, Inc.

Agency-directed Personal Care Services

An agency-directed attendant care service supporting daily living needs of individuals (children or adults) living in their family home. Services occur at home or in the community assisting the individual. Services might include direct assistance with health care needs, self care activities or tasks promoting independence, productivity, and community integration. Attendant care workers are employed, trained and supervised by the agency chosen.

Overnight Respite for relief to family for overnight. Planned in segments and time limited

Enhanced Care Services is overnight assistance for repositioning nighttime medication and/or other medically necessary supports.

Supportive Home Care (SHC) is provided by an agency to assist a person living with someone meeting the definition of family OR in one of the following settings: A setting where a child, 5 to 21 yrs. of age is in the custody of DCF but not living with someone meeting the definition of family, or a setting in which a child, 15 yrs. of age or older, resides with a person who does not meet the definition of family and who has not been appointed the legal guardian or custodian.

Trust HomeCare, LLC

Self-directed Personal Care Services

A self-directed service* offering personal care on a one-to-one basis to ensure the health and welfare of the individual. Support with the tasks the person would typically do for themselves or by themselves, if they did not have a disability. Such services occur at home or in the community assisting the individual. Services might include direct assistance with health care needs, self care activities or tasks promoting independence, productivity, and community integration. Personal Care Services is available to individuals who live in a home of their own or a family home.

Overnight Respite for relief to family for overnight. Planned in segments and time limited.

Enhanced Care Services is overnight assistance for repositioning nighttime medication and/or other medically necessary supports.

**For additional information about Self Directing Services see "Self Direction" brochure.*

Advocate Care Services, Inc.
Another Day, Inc.
GT Independence Helpers, Inc.
Life Patterns, Inc.
OCCK, Inc.
Resource Center for Independent Living, Inc.

Specialized Medical Care

Long-term nursing support provided to individuals who are medically fragile or technology dependent. The ongoing medical needs of the individual must be met to ensure the person can live outside of a hospital or ICF/MR. Providers of this service must be employed or supervised by a Home Health Agency, be an RN or LPN and be trained with the medical skills necessary to care for and meet the medical needs of the individual.

Accessible Home Health, Inc.
Craig Homecare
Life Patterns, Inc. (self-directed only)

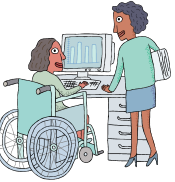
Medical Alert Rental (aka Life Line)

This is provided to individuals who have a medical need that could become critical at any time. Medical alert devices are a small instrument carried or worn by the individual, which, by the push of a button, automatically dials the telephone to a responder network.

Home Buddy, LLC

Assistive Services

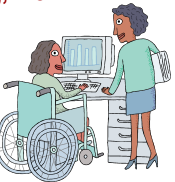
- Home Modifications/Equipment – A service providing equipment, modifications or improvements to an individual's living environment to permit them to remain in their home and ensure safety, security and accessibility.
- Van Lifts – Vehicle modification provided for safe transportation to help an individual be involved in their community.
- Wheelchair Modifications – This service provides necessary modifications to wheelchairs of adults 21 years of age and older to promote health, well-being and independence.



Resource Center for Independent Living, Inc.

Wellness Monitoring

A registered nurse will visit the individual's home to evaluate the level of wellness of the individual to determine if medical services recommended by a physician are being utilized properly and if the health of the individual is allowing them to remain in their home without more frequent skilled nursing intervention. Visits are limited to once every 60 days. Assistance is offered in orientation to surroundings, adjustment to medication, personal hygiene and monitoring of vitals.



Craig Homecare
Disability Supports of the Great Plains
Interim Healthcare
TECH, Inc.